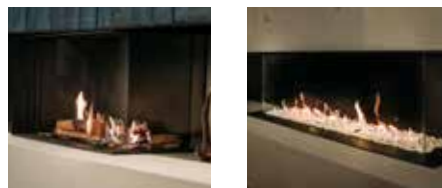


LINEAR FIRE

# MatriX | 800/400 III



## DECORATION OPTIONS

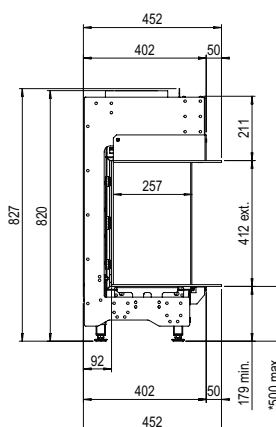
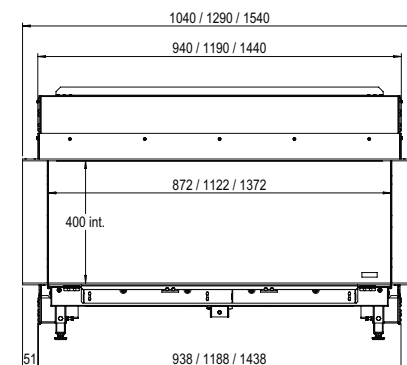
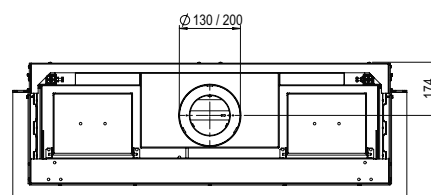


## Heating functionality

Nea

## Flue material

130/200



\* incl. optional adjustable feet

## Specifications

### Exterior dimensions WxHxD in mm

1040 x 827 x 452

### Fire display WxHxD in mm

872 x 400 x 257

### System

Double Line Burner

### Decoration

Log set or White Pebble

### Back walls

Back wall smooth steel

### Remote

Via app and ITC Remote

### Power

7,1 kW

### Operating system

Honeywell

### Energy label

B

### Options (at a surcharge)

Black glass back wal  
Non-reflective glass  
Adjustable feet  
Wall bracket

There is **so much to tell...**